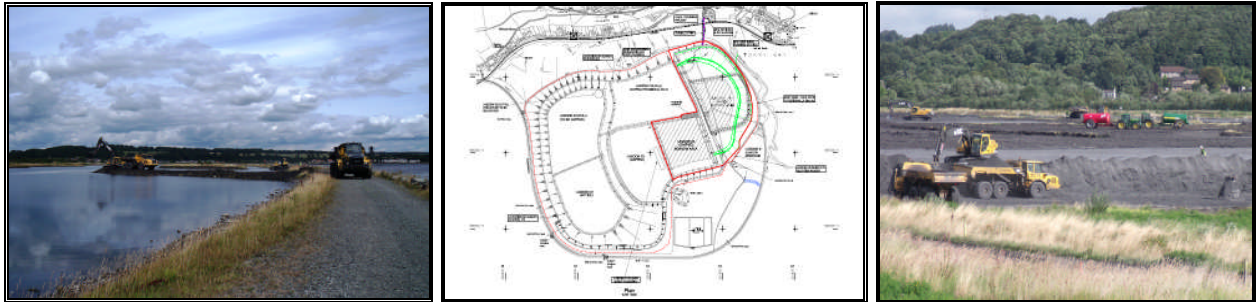


PROJECT PROFILE:



Location	Low Valleyfield, Fife, Scotland.
Client	Raynesway Construction Ltd
Value	£950,000 Re measurable Subcontract
Duration	52 Weeks
Quantities	455,000m3 of suitable fill to embankments. 125,000m3 of colliery shale excavation. 350,000m2 of capping layers
Description	Valleyfield Ash Lagoons are a disposal facility used by Longannet power station for dealing with the by product (PFA) from coal burning electricity generation. . The work consists of constructing an embankment, 1100m in length and up to 8m high, from site won PFA to create new lagoon capacity. Other works include the construction of a marine causeway, placement of capping layers to existing filled lagoons and the placement of rock armour protection.
Key Issues	Dust generation has to be carefully controlled by water suppression and stage excavation. Suitable PFA material has to be processed to achieve correct moisture contents or won using selective excavation.
Technical Referee	Paul Tannock Asset Manager and Project Services Scottish Power Energy Wholesale 01259 730 631